

**November 22, 2025**

**[Website Home](#) [Lunch Menus](#) [Parent Info](#) [Get Involved](#) [Facebook](#) [Twitter](#)**



## **Important Dates**

- **Wednesday, Nov. 27 - Friday, Nov. 29 - No School**
- **Monday, Dec. 2 - Newspaper Club Informational Meeting 8 am**

- **Thursday, Dec. 5 - Skateland PTO Fundraiser 5:30-8 pm**
- **Friday, Dec. 6 - Student Council Meeting**
- **Wednesday, Dec. 11 - Band/ Orchestra/Choir Concert 6:30 pm**
- **Thursday, Dec. 12 - 2nd & 3rd Grade Fine Arts Night 6:30 pm**

## **Some of Today's Paw Winners**



# PTO NEWS



Poplar Creek's first Skateland fundraiser is coming up **Dec. 5, at Skateland in Waukesha from 5:30-8 PM. Cost for admission is \$10 cash** (this includes skate rental), remember Skateland does not accept credit cards; bring cash so you don't have to use the ATM. All are welcome, be sure to invite friends the more the merrier!

# School News

This is a gentle reminder that it is important to be vigilant in the inspection of the children's heads for the presence of head lice.

We are in the season of hats and scarves and, as always, children love to share and try on each other's things; occasionally children will put on something thinking it is their own.

Here is a list of precautions and tips, followed by the "what to do, if" recommendations:

Do not share combs or brushes, caps, hats or headgear (helmets, headsets)

☐ Keep long hair in a hair band or ponytail, etc

☐ Inspect children's scalps frequently

☐ Avoid activities that lead to head to head contact

☐ Watch for symptoms of suddenly scratching their head a lot

☐ Head lice infest children from all backgrounds and walks of life. Anyone can get head lice, no matter how clean their home or hair is or where they live, go to school, or play.

What to Do if you find lice or nits (eggs):

☐ Use an over the counter pediculicide or contact your physician for a prescription pediculicide. Follow the directions on the package of your chosen product.

☐ There are lice clinics, in the area, that will treat people for a cost

☐ Notify the office or school nurse

☐ Wash all coats, hoodies, etc. of the child in hot water

☐ Wash bedding, towels, mattress cover, etc. in hot water

☐ Vacuum mattress, carpets, upholstered furniture, car seat

☐ Replace or wash hair brushes and combs

☐ Repeat the pediculicide in seven days per manufacturer instructions.

☐ Carpeted areas should be vacuumed as frequently as possible. Head lice are seeking new hosts, not hiding places.

☐ Pesticide extermination services are Not recommended by the CDC or the National Pediculosis Association

## **2nd & 3rd Grade Fine Arts Night is Thursday, Dec. 12!**

**Please have 2nd and 3rd grade students in their homerooms between 6-6:15. We will begin our performance at 6:30.**

This is a special evening where students can show their friends and family some of the amazing work they have been doing in art and music classes.

Every student will have several pieces of artwork on display. Every student has an important role in the concert, too. Thank you so much for showing your support for all of their hard work.

Students are asked to look nice for the evening concert if possible. Please avoid athleisure and jeans if you are able.

If your child will be wearing a skirt, please make sure they are wearing leggings or shorts underneath. Also, please save heels for another event. Students can get their heels caught on the risers and fall.

If you have any questions, please reach out to

Erica Polak (music) [erica.polak@nbexcellence.org](mailto:erica.polak@nbexcellence.org)



Kyra Seely (art) [kyra.seely@nbexcellence.org](mailto:kyra.seely@nbexcellence.org)



Horicon Bank will donate \$1 to the Education Foundation of New Berlin for each Toy donated to the Toy Drive; up to \$1,000.

*Bring a Toy, Spread some Cheer,  
Help Our Students Grow This Year!*

Bring in a toy to donate and join us for Christmas cheer,  
including refreshments and fun activities for children!

Horicon Bank	15600 W. Cleveland Ave.	December 7
Open House	New Berlin, WI 53151	10 am – 12 pm

Or drop off at SDNB Schools or District Office Nov 25 – Dec 5



# Recess Fun!







# Before & After School Activities

## Newspaper Informational Meeting



When: **Monday, December 2nd from  
8:00 am - 8:30 am**

Where: **Poplar Creek Library**

Who: **5th and 6th Grade Students**

---

Do you enjoy creative writing?

Do you have a flair for speaking your mind?

Do you like to provide your readers with facts and details?

**Then our School Newspaper Club is for you!**

# CHARACTER KIDS

**AFTER SCHOOL THEATER CLASSES -**  
**WINTER SESSION**

Join Character Kids for our fun-filled After School Theater Classes at Poplar Creek! The Winter Session runs Thursdays, 3:50-4:50 pm, Dec. 12 - March 6 (no class 12/26 or 1/2). Students will explore new stage skills, theater games and performance material; so new and returning students are welcome at each session. Parents are invited to a special performance on the last day of class. Focus is put on developing imagination, social skills and a positive self-image through the performing arts. [Visit our website for more info or to register.](#) We hope to see you there!



## **Registration is now open for the next session of Mad Science**

This 6-week program starts on Monday, Nov. 25 - Jan. 13 from 3:55 - 4:55 pm in the Poplar Creek art room.

Cost is \$148.50 or register online by 11/18 for an automatic discount. Visit our website [milwaukee.madscience.org](http://milwaukee.madscience.org) or scan the code below.



**Scan our QR  
Code to Register  
Today!**



# Community Announcements



The poster features a festive design with a light gray background. It is decorated with various holiday-themed elements: holly leaves and red berries in the top-left and bottom-right corners; several white snowflakes scattered throughout; and several red and white striped peppermint candies. A small, decorated Christmas tree is visible in the upper right. A central green banner contains event details. The text is primarily in red and green, with some elements in white. A cartoon illustration of Santa Claus is positioned on the left side of the lower half.

**Holiday Craft Vendor Fair**  
Over 60 Crafters and Vendors  
Adults—\$3      Children Free

Sunday November 24th  
New Berlin Eisenhower High School  
Breakfast 9am—12pm      Craft Vendor Fair 9am—2pm

**Pancakes**  
With *Santa*

Join Santa for a Pancake Breakfast  
Children—10 and Under \$6      Adults \$12  
Includes Admission to the Craft Fair  
Sponsored by Eisenhower Bands





## Letters From Santa Fundraiser

Do you remember how excited you were to get mail when you were little?  
What if you had received a personalized letter from Santa Claus?!

Girl Scout Troop 1197 is spreading holiday cheer to the children in your life by sending letters from Santa. With the information you provide, your child will receive a personalized letter complimenting them on an achievement or good deeds. Letters will be mailed in time for Christmas.

Each letter is only \$13. All profits from the sale of the letters go to help Girl Scout Troop 1197 fund our Silver Awards, which are community improvement projects.

To request a letter from Santa, please submit and fill out the [form](#).  
Once your form has been received we will communicate via email regarding payment.



If you have any questions, please email [pwrtakoff@yahoo.com](mailto:pwrtakoff@yahoo.com)

Girl Scouts USA is not affiliated with the School District of New Berlin. The School District does not endorse, sponsor, or supervise the activity identified in this communication.

# Special Christmas Mail!

Only \$13  
per letter

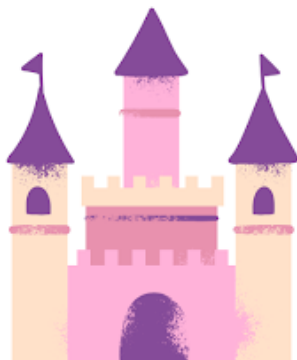
Fill in a simple form,  
Santa mails your child a letter





### Activities

- music
- dancing
- candy table
- face paint
- coloring
- photo booth!



JOIN US FOR A MAGICAL  
EVENING AT NEW BERLIN  
DECA'S ANNUAL

## **FATHER DAUGHTER DANCE**

**DECEMBER 6**  
**ELMWOOD  
ELEMENTARY**  
**6:00-8:30**



PLEASE PAY WITH THE QR CODE  
OR WITH CASH AT THE DOOR

Contact information:  
Melissa Bahnson  
[melissa.bahnson@nbexcellence.org](mailto:melissa.bahnson@nbexcellence.org)



\$5 for each additional  
daughter

10% of profits go toward  
Muscular Dystrophy

Grandpas, uncles, and  
father figures are always  
welcome!



New Berlin Eisenhower Theater



Get your tickets now for the highly anticipated holiday musical performed by Eisenhower Middle and High School students ....The Best Christmas Pageant Ever JV. December 6-8!

This is something for the whole family to enjoy.

Tickets for this show are \$15 for adults, \$12 for seniors, and \$10 for students. The link and and QR code are below.

<https://www.vancoevents.com/us/CSWW>



# PC Coyotes Lead, Believe, Achieve!







## EDUCATION FOUNDATION OF NEW BERLIN

*Increasing Financial Support,  
Awareness & Advocacy  
for The School District of New Berlin.*

***Visit [www.efnb.org](http://www.efnb.org) today!***

**Do you like us on fb? If not, you are missing out on candid photos and video clips of daily events and activities at PC.**

**Be sure to [check out our page and like it](#) so you don't miss out!**

Poplar Creek Elementary School • 17401 West Cleveland Avenue, New Berlin, WI 53146

Phone: [\(262\) 789-6520](tel:(262)789-6520) • Fax: [\(262\) 789-6234](tel:(262)789-6234)

Copyright © 2014 School District of New Berlin. All Rights Reserved.

The School District of New Berlin does not discriminate against individuals on the basis of age, gender, race, color, religion, national origin, ancestry, creed, pregnancy, marital or parental status, sexual orientation, or physical, mental, emotional, or learning disability. Federal law prohibits discrimination in education and employment on the basis of age, race, color, national origin, gender, religion, or disability. For more information, please follow this link: <http://www.nbexcellence.org/district/disclaimers.cfm>.